

SMP EPCM Team Produces Exceptional Results for Rio Tinto

As part of Rio Tinto's 283mtpa iron ore expansion project, SMP Engineering was engaged by the Accommodation & Town Management Pilbara division to assist with the delivery of significant capital [CAPEX] and operational [OPEX] funded projects.

SMP assigned an EPCM team that mobilised and integrated seamlessly with the existing client (ATM) organisation. Figure 1 below demonstrates the organisation structure that was implemented.

Our EPCM team delivered approximately \$30m on multiple projects for numerous stakeholders across the following mine sites;

- **Dampier Port {RTIO Port Operations}**
 - No 1 Workshop Refurbishment
- **Cape Lambert {RTIO Port Operations}**
 - Main Administration Building Refurbishment
 - Installation of overflow facility and refurbishment of contractors EPCM office
- **2,6 & 7 Mile {RTIO Rail Operations}**
 - Installation of 60 person office complex
 - Refurbishment of the Main Administration Engineering facilities
 - Installation of modular overflow complex

The functional role of the team was to develop projects from concept stage through the project life cycle and handover to the key stakeholder as a turnkey solution. This comprised the development of Feasibility Studies, Capital Expenditure Applications (CEA's) through to Procurement and onsite contractor management as per RTIO HSEQ policies and procedures.

Project Key Facts

Project Owner

Rio Tinto Iron Ore (RTIO)

Project

283mtpa Iron Ore Expansion Project

Client

Accommodation & Town Management

Value

Approx \$30m

SMP Scope

To project manage Capital & Operational funded projects from concept through to handover across numerous sites and divisions

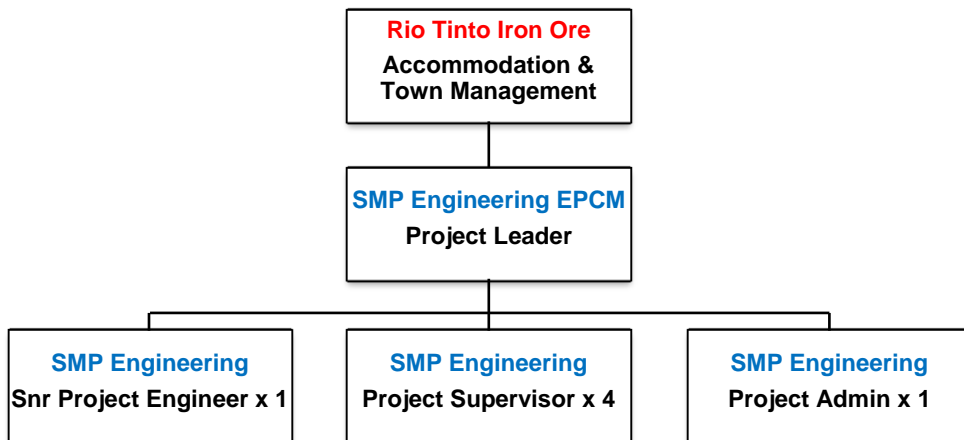
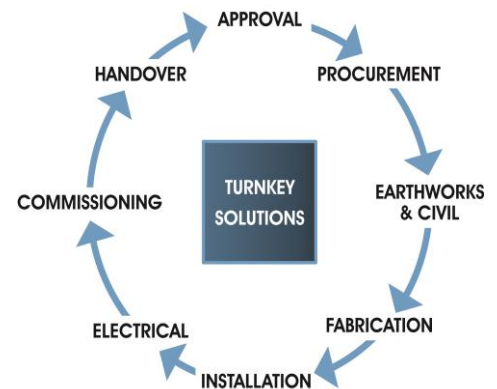


Fig 1: EPCM Org Structure

Project Achievements

- + Seamless integration of SMP EPCM team with existing client organisational structure
- + Successful EPCM projects delivered on time and under budget
- + Zero injuries & delivered as per RTIO HSEQ policies
- + Zero environmental incidents
- + Numerous multidisciplinary contractors site managed to RTIO HSEQ systems

Contact Us

Call the team at SMP Engineering for all your structural, mechanical and piping needs on 9412 8000. More project case studies can be viewed at www.smpeng.com.au

Structural+Mechanical+Piping+Engineering