

Port Hedland RGP6 Inner Harbour Project

BHP Billiton's ongoing development of the Port Hedland Inner Harbour, includes the construction of two additional berths, ship loaders, a car dumper and port blending infrastructure.

SMP Engineering (SMP) provided an execution crew of 20 with 1 Superintendent and 2 Supervisors to support Civmec with steel modularisation at their Henderson facility.

Scope of Works

SMP was engaged to complete works on a 300T Shuttle Truss which comprised of 230T of structural and 70T of mechanical equipment. SMP also completed the fit out of 3 off 30 metre overland conveyor modules.

The fit out included all structural, mechanical and piping works fully assembled and ready for site installation as one module. All drives, pulleys and mono rails were fully aligned prior to delivery.

Project Key Facts

Project Owner

BHP Billiton

Project

RGP6 Inner Harbour Project

Client

Civmec

Value

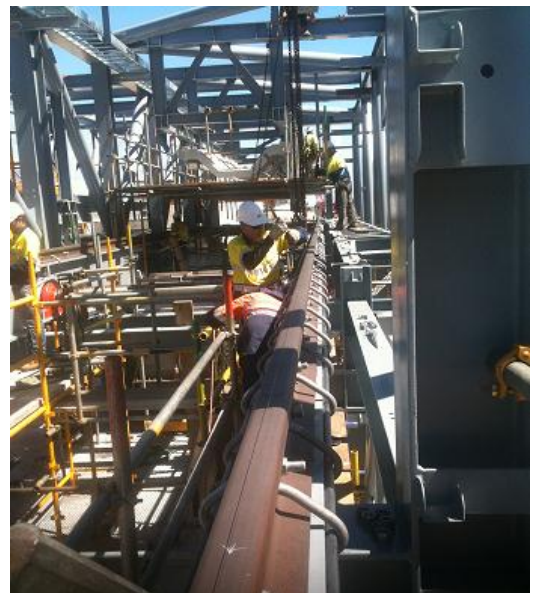
~\$100m

SMP Scope

Execution Crew of 22

Project Outcomes

- + Coordination with fabrication for modularisation
- + Trial Assemblies
- + Critical Path Compliance
- + Efficient Execution



Contact Us

Call the team at SMP Engineering for all your structural, mechanical and piping needs on 9412 8000. More project case studies can be viewed at www.smpeng.com.au

Structural+Mechanical+Piping+Engineering